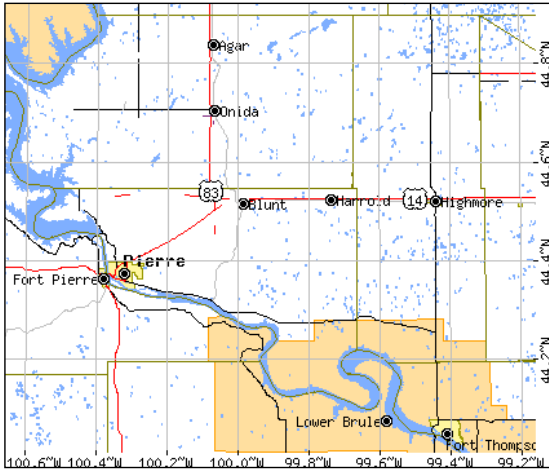
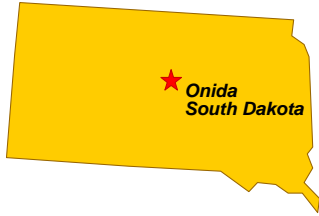


Tagg Homesteads

Sully County, Dakota Territory (South Dakota)



U.S. Census Bureau Map

NOTES

Not all local streets shown

Displayed sections are for Meridian 5, Township 115 N, Range 77 W in Sully Co., South Dakota

Homestead and Cash Sales are highlighted in yellow.

Timber Culture Act land are highlighted in light tan.

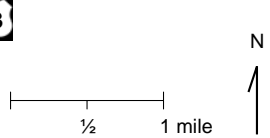
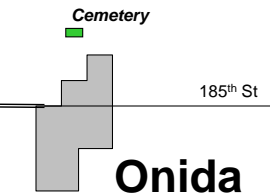
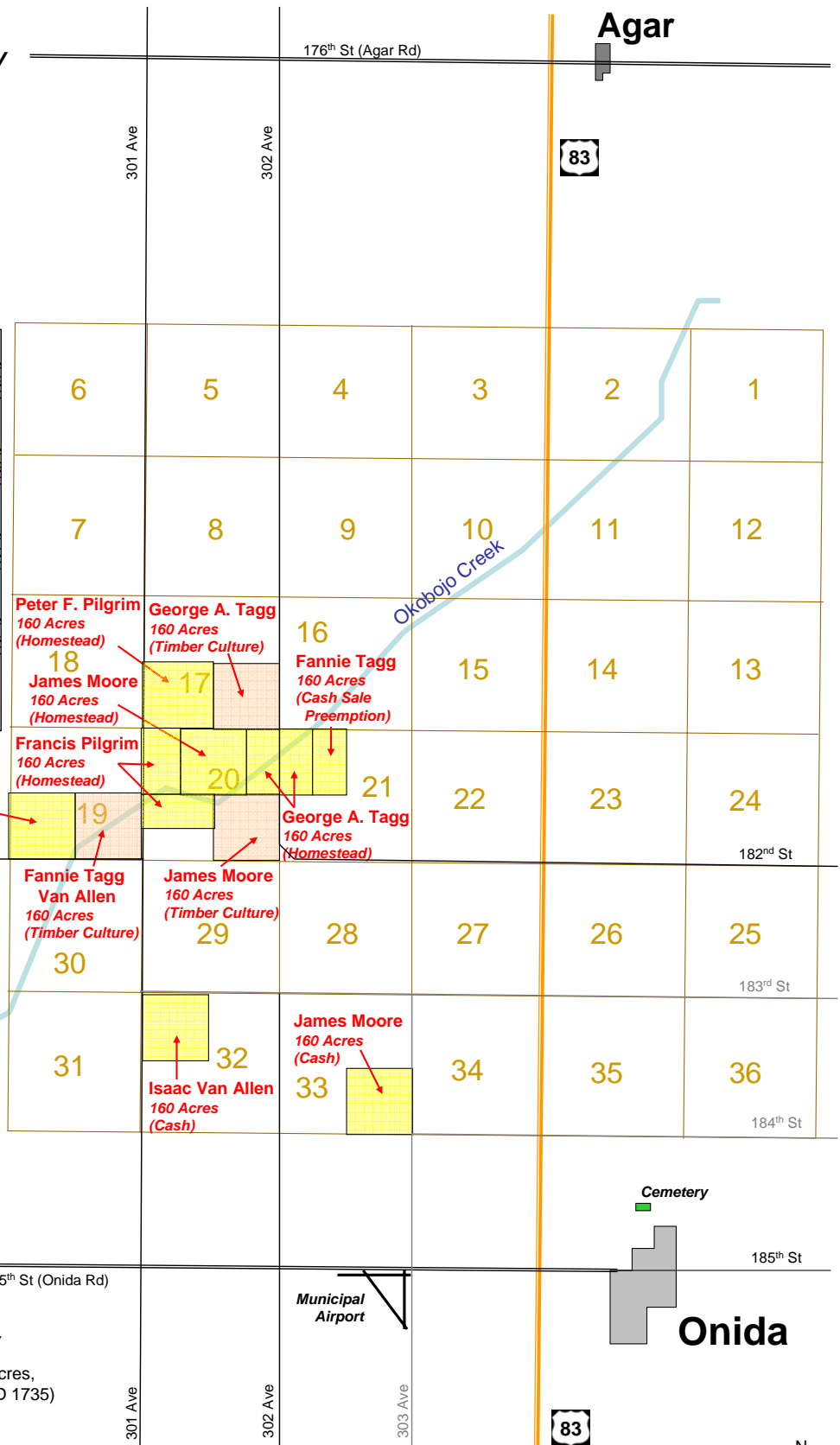
All "Taggs" are children of Thomas R. & Mary Coultas Tagg.

Mary C. Tagg married James M. Moore after Thomas R. Tagg's death (before 1870) and prior to the 1884/5 Tagg migration to the Dakota Territory.

Fannie L. Tagg married Isaac Van Allen (or Van Alen) while living in Sully County.

NOTES All entries are in Township 115 N, Range 77W in Sully County

- Moore, James M. Sec 20 (E ½ NE Qtr & W ½ NE Qtr), 160 acres, Homestead Act, 1889 Patent (docID 1735)
- Moore, James M. Sec 33 (SE Qtr), 160 acres, Cash Sale, 1890 Patent (docID 6154)
- Moore, James M. Sec 20 (SW Qtr), 160 acres, Timber Culture Act, 1894 Patent (docID 277)
- Pilgrim, Francis Sec 20 (W ½ NW Qtr & N ½ SW Qtr), 160 acres, Homestead Act, 29 Dec 1890 (docID 3916)
- Pilgrim, Peter F Sec 17 (SW Qtr), 160 acres, Homestead Act, 7 Jun 1893 (docID 153)
- Tagg, George A. Sec 20 (E ½ NE Qtr) & Sec 21 (W ½ NW Qtr), 160 acres, Homestead Act, 1891 Patent (docID 4004)
- Tagg, George A. Sec 17 (SE Qtr), 160 acres, Timber Culture Act, 1894 Patent (docID 185, Filed 1884)
- Tagg, Herbert E. Sec 19 (E ½ SW Qtr plus lots 3 (NWSW Qtr) & 4 (SWSW Qtr), 166.95 acres, Homestead Act, 1892 Patent (docID 44)
- Tagg, Fannie L. Sec 21, (E ½ NW Qtr), 80 acres, Cash Sale (Preemption), 1889 Patent (docID 15996, Filed 1886)
- Van Allen, Fannie L. Sec 19 (SE Qtr), 160 acres, Timber Culture Act, 1896 Patent (docID 372, Filed 1886 as Fannie Tagg)
- Van Allen, Isaac N. Sec 32 (NW Qtr), 160 acres, Cash Sale, 1889 Patent (docID 13004)



Walter Fred, ©2007
fredw@fredquest.com